



M.15.1/1


Come, noble nymphs, and do not hide (Setting 1)


BEN JONSON


ANON.

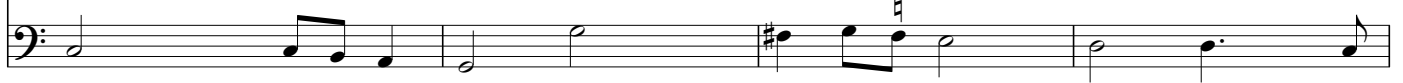
[CANTUS] 
 Come, no-ble nymphs, and do not hide The joys for which you__ so pro-vide.

[BASS] 

5 
 If not to min - gle with the men, What do you here? Go__ home a - gain.



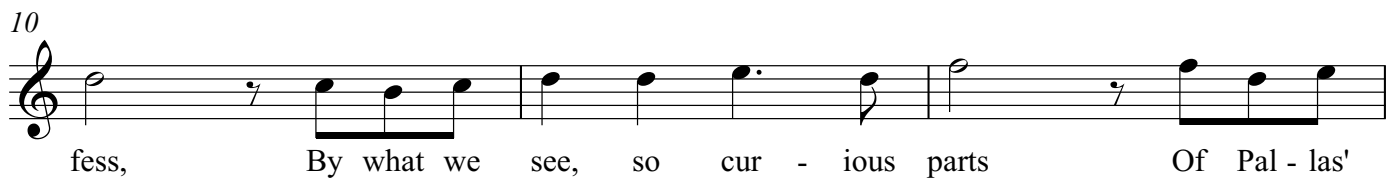
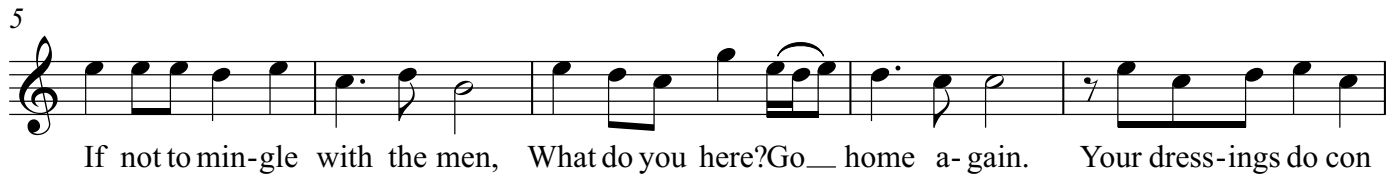
9 
 Your dress - ings do con - fess, By what we see, so cur - ious parts Of Pal - las'



13 
 and A - rach - ne's arts, That__ you__ could__ mean no less.



BEN JONSON **Come, noble nymphs, and do not hide (Setting 1)** ANON.



[BASS]

BEN JONSON **Come, noble nymphs, and do not hide (Setting 1)** ANON.

