

M.8.1

The Fools' Masque

ANON.

[TREBLE] [BASS]

14 [Fast]

21 [Tempo 1]

28 [Fast]

35

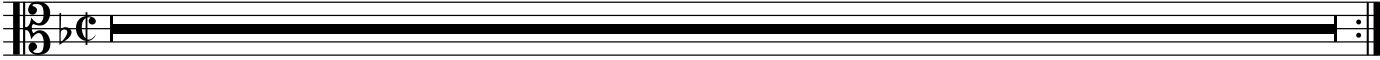
[TREBLE]

8.1

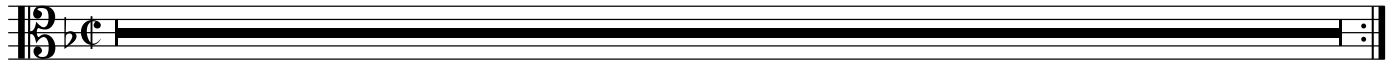
The Fools' Masque

ANON.

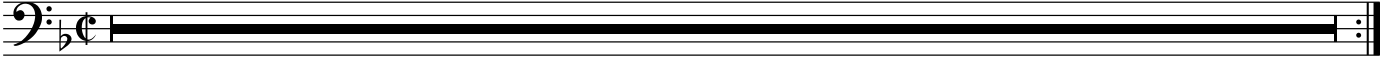
TACET



TACET



TACET



Treble Lute in D

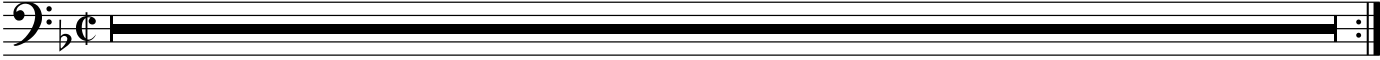
TACET



A musical staff with a treble clef and a key signature of one flat (B-flat). The staff is mostly obscured by a thick black horizontal bar, indicating a tacet section. The word "TACET" is printed above the staff. The staff ends with a double bar line and repeat dots.

LUTE

TACET



KEYBOARD

TACET



A musical staff with a treble clef and a key signature of one flat (B-flat). The staff is mostly obscured by a thick black horizontal bar, indicating a tacet. The word "TACET" is written above the staff. The staff ends with a double bar line and repeat dots.