

### 4. Accompanied recitative (First Satyr): What doth make you thus delay?

[Violin 1]

[Violin 2]

Echo

What doth make you thus de - lay?

[Bassi]

Octaves

Octaves

6

Vn 1

Vn 2

Echo

Hath the tank - ard touch'd your brain?

Bassi

11

Vn 1

Vn 2

Echo

Sure, they're fall'n a - sleep, a - gain; Or I

Bassi

*p* *f* *p* *pp*

*p* *f* *p* *pp*

16

Vn 1

Vn 2

Echo  
doubt it was the vain Ec - ho did me en - ter - tain.

Bassi

*p* *f* *p* [*f*]

21

Vn 1

Vn 2

Echo  
Prove a - gain.

He winds his cornett in D  
Cornett (First Satyr)

Bassi

27

Cornett (First Satyr)

Echo  
I thought 'twas she.

Bassi

*p*

### 5. Air (First Satyr and Echo): Idle nymph, I pray thee, be

**Siciliano**

First Satyr  
I - dle nymph, I pray thee, be Mod - est,

Echo  
I - dle nymph, Mod - est,

[Bassi]

6 6 4 3

5

First Satyr  
mod - est, and not fol - low me, not fol - low me. I not love my -

Echo  
mod - est, not fol - low me, not fol - low me.

[Bassi]

6 6

9

First Satyr  
self, nor thee, not love my - self, nor thee.

Echo  
My - self, nor thee, not love my - self, nor thee.

[Bassi]

13

First Satyr  
I - dle nymph, i - dle nymph, I pray thee, be\_\_\_\_\_

Echo  
I - dle nymph, i - dle nymph, I pray thee.

[Bassi]

6 6 6 6 5 #

17

First Satyr  
Mod - est, and mod - est, and not fol - low me,

Echo  
Mod - est, be mod - est. Not fol - low

[Bassi]

20

First Satyr

not fol - low me, be mod - est, and not fol - low me, be

Echo

me, not fol - low me, be mod - est, and not fol - low

[Bassi]

23

First Satyr

mod - est, and not fol - low me.

Echo

me, be mod - est, and not fol - low me.

[Bassi]

*pp*

*The FIRST SATYR winds his cornett (in G)*

26

Cornett (First Satyr)

*... and is answer'd by another SATYR.*

### Recitative (Satyrs and Silenus): Ay, this sound I better know

First Satyr

Ay, this sound I bet - ter know wou'd their fac - es they might show.

[Basso continuo]

Cornet

Accompanied recitative (First Satyr): What doth make you thus dela

15

16

8 3

5 Air (First Satyr and Echo): Idle nymph, I pray thee, be

29

2 4

5

15

20

6

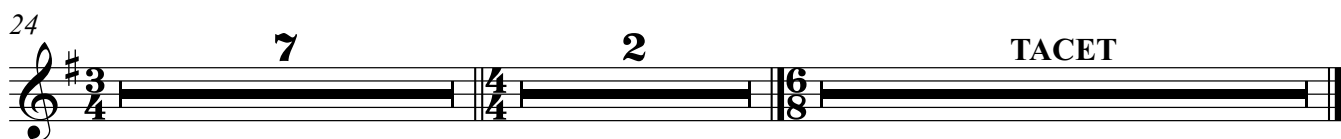
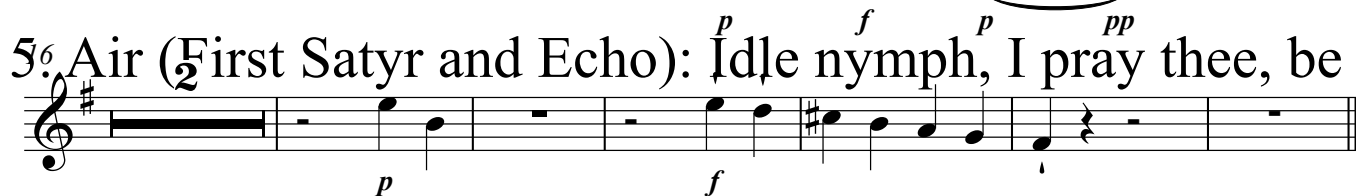
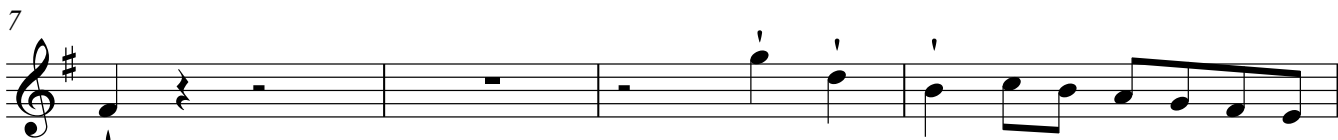
... and is answer'd by another SATYR.

29

TACET

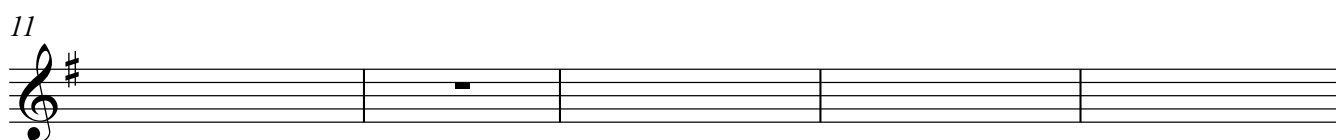
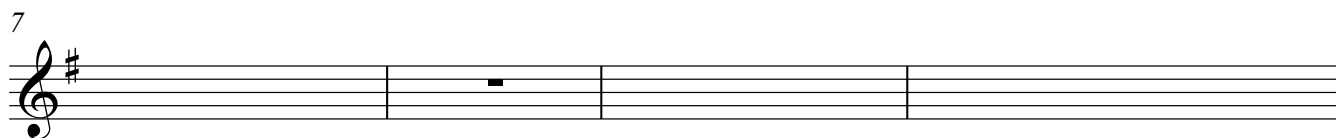
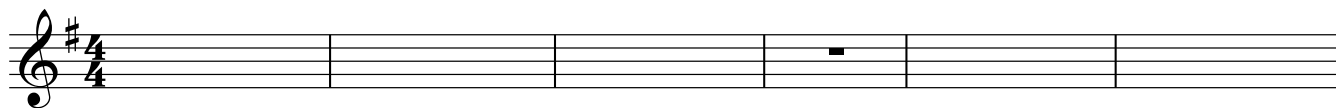
[Violin 1]

Accompanied recitative (First Satyr): What doth make you thus dela

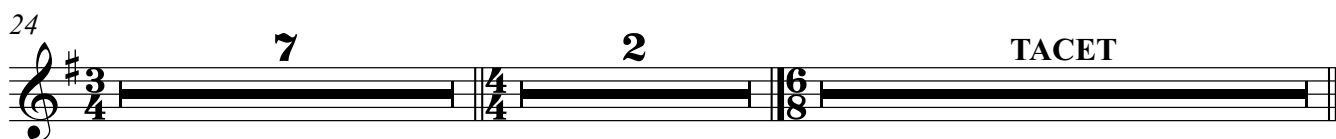
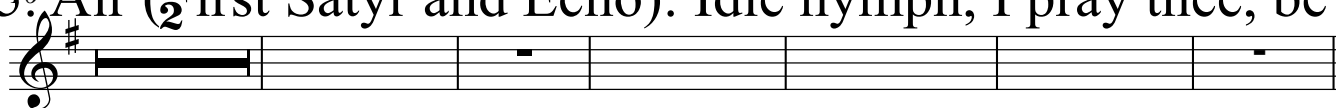


[Violin 2]

Accompanied recitative (First Satyr): What doth make you thus dela



56 Air (First Satyr and Echo): Idle nymph, I pray thee, be



First Satyr

Accompanied First Satyr (First Satyr) | Idle nymph, I pray thee, thus delay

Siciliano

TACET

I - dle nymph, I pray thee, be \_\_\_\_\_ Mod-est,

5

mod-est, and not fol-low me, not fol-low me. I not love my-self, nor

10

thee, not love my-self, nor thee. I - dle nymph, i - dle nymph,

15

I pray thee, be \_\_\_\_\_ Mod est, and mod est, and not fol-low me,

20

not fol-low me, be mod-est, and not fol-low me, be mod-est, and not fol-low me.

The FIRST S

25

7

Recitative (Satyrs and Silenus): Ay, this sound I better know

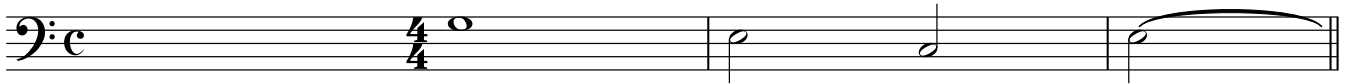
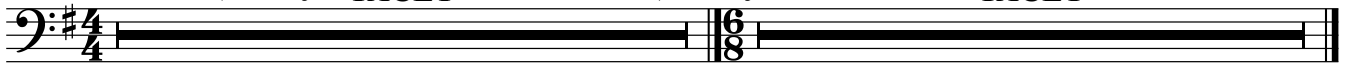
Ay, this sound I bet-ter know wou'd their fac - es they might show.



Violoncello

Accompanied (First Satyr and First Silenus): Idle Whimsy, I make thee, thus delay

Recitative (Satyrs and Silenus): Ay, this sound I better know



Echo

Accompanied recitative (First Satyr): What doth make you thus delay

2

What doth make you thus de - lay? Hath the

8

tank - ard touch'd your brain? Sure, they're

12

fall'n a - sleep, a - gain; Or I

16

doubt it was the vain Ec-ho did me en - ter - tain. Prove a -

*He winds his cor*

23

### Air (First Satyr and Echo): Idle nymph, I pray thee, be

gain.

31

I thought 'twas she. I - dle nymph, Mod-est,

5

mod-est, not fol-low me, not fol-low me. My-self, nor thee,

11

not love my - self, nor thee. I - dle nymph, i - dle nymph, I

16

pray thee. Mod - est, be mod-est. Not fol - low

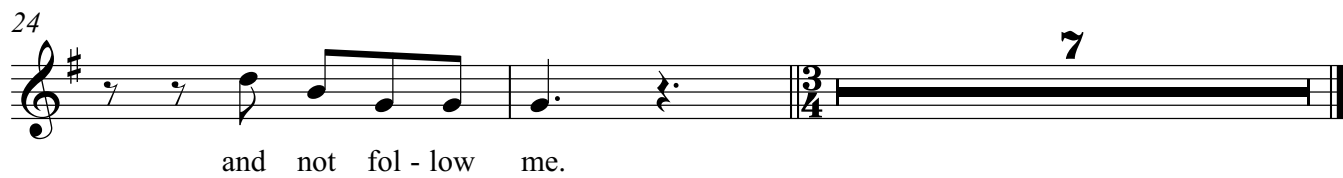
20



me, not fol-low me, be mod-est, and not fol-low me, be mod-est,

Detailed description: This block contains the first line of musical notation, measures 20 through 23. It is written on a single treble clef staff with a key signature of one sharp (F#). The melody consists of quarter and eighth notes with rests. The lyrics are: "me, not fol-low me, be mod-est, and not fol-low me, be mod-est,".

24



and not fol - low me.

Detailed description: This block contains the second line of musical notation, measures 24 and 25. Measure 24 continues the melody from the previous line. Measure 25 features a repeat sign followed by a 3/4 time signature and a whole rest. A fermata is placed above the whole rest, with the number "7" written above it, indicating a seven-measure hold. The lyrics are: "and not fol - low me."

**TACET**



Detailed description: This block contains a single treble clef staff with a common time signature (C). The staff is filled with a solid black line, representing a complete rest for the instrument. The word "TACET" is written in bold capital letters above the staff.

[Bassi]

# Accompanied recitative (First Satyr): What doth make you thus dela

Octaves Octaves

7

11

*p* *f* *p* *pp*

16

**3** *p* [*f*]

## 5<sup>24</sup> Air (First Satyr and Echo): Idle nymph, I pray thee, be

*p*

6 6 4 3

5

6 6

13

6 6 6 6 6<sub>5</sub> #

20

**2**

23

*pp*

7

TACET