

Drink to me only with thine eyes (Setting 5)

BEN JONSON

THOMAS LINLEY SENIOR (1733-95)

All[egr]o

TREBLE 1
 Drink to me on - ly with thine eyes, _____ with thine_

TREBLE 2

 Drink to me on - ly with thine

BASS

BASSO

8

eyes, drink to me on - ly with thine_ eyes, And I will pledge with_ mine;

eyes, _____ with_ thine_ eyes, And I will pledge with_ mine;

Drink to me on - ly with thine eyes, And I will pledge with mine;

16

p Breathe but a kiss in - to_ the_ cup, breathe but a kiss in - to_ the_

[*p*] Breathe but a kiss in - to_ the_ cup, breathe but a kiss in - to_ the_

[*p*] Breathe but a kiss in - to_ the cup, breathe but a kiss in - to_ the

p *p*

cup, And I'll not ask for wine, I'll not ask, not
 cup, And I'll not ask, not ask for wine, I'll not ask not
 cup, And I'll not ask, not ask for wine, I'll not ask not

ask for wine. wine. The thirst that from the soul, that from the
 ask for wine. wine. The thirst that from the soul,
 ask for wine. wine. The thirst that from the

soul de - rives De - mands, de - mands, de - mands a drink di -
 de - rives De - mands, de - mands a drink di -
 soul de - rives De - mands de - mands a drink di -

46

vine; But could I of Jove's nec - tar

vine; But could I of Jove's nec - tar

vine; But could I of Jove's nec - tar sip, Jove's nec - tar

53

sip, I would not bar - ter thine, but could I of Jove's

sip, I would not bar - ter thine, but could I of Jove's

sip, I would not bar - ter thine, but could I of Jove's

60

nec - tar sip, I would not bar - ter thine. The thine I sent thee

nec - tar sip, I would not bar - ter thine. thine.

nec - tar sip, I would not bar - ter thine. thine.

67

late a rose - ate wreath, I
I sent thee late a rose - ate wreath, I

74

sent thee late a rose - ate wreath, Not so much hon' - ring thee
a rose - ate wreath, Not so much hon' - ring thee

81

p
As think - ing that on thy fair breast, as think - ing that on
[*p*]
As think - ing that on thy fair breast, as think - ing that on
[*p*]
As think - ing that on thy fair breast, as think - ing that on
p

109

[tr]
 sent'st it back to me: Since which it
 sent'st it back to me: Since which it
 sent'st it back to me: Since which it grows, and smells, I

116

grows, and smells, I swear Not of it - self, but thee, I swear not of it -
 grows, and smells, I swear Not of it - self, but thee, since which it
 swear, and smells, I swear Not of it - self but thee, since which it

124

self, but thee, I swear, Not of it - self, but thee. And thee.
 grows, and smells, I swear, Not of it - self, but thee. thee.
 grows, and smells, I swear, Not of it - self but thee. thee.

1. 2.

Drink to me only with thine eyes (Setting 5)

TREBLE 1

BEN JONSON

THOMAS LINLEY SENIOR (1733-95)

All[egr]o



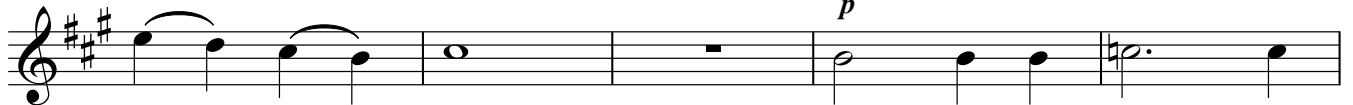
Drink to me on - ly with thine eyes,

7



with thine eyes, drink to me on - ly with thine eyes, And I will

14



pledge with mine; Breathe but a kiss in -

19



to the cup, breathe but a kiss in - to the

24



cup, And I'll not ask for wine, I'll not ask, not

31



ask for wine. wine. The thirst that from the soul, that from the

38



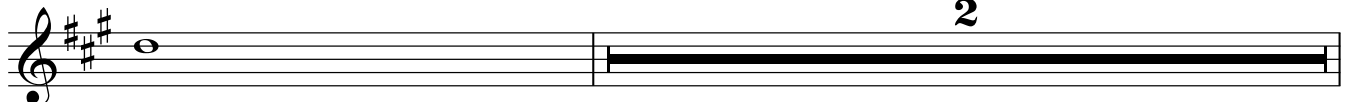
soul de - rives De - mands, de -

42



mands, de - mands a drink di -

46



vine;

49

But could I ___ of Jove's nec - tar sip, I would not bar - ter ___

56

thine, but could ___ I ___ of Jove's nec - tar ___ sip, I

62

would not bar - ter ___ thine. The thine I sent thee

67

late a rose - ate wreath, ___ a rose - ate ___ wreath, I

74

sent thee late a rose - ate ___ wreath, Not so much hon' - ring ___ thee

81

As think - ing that on thy ___ fair ___ breast, as think - ing that on

88

thy ___ fair ___ breast It could not with - er'd be, it could not,

95

could not ___ with - er'd ___ be. I be. And thou there - on didst on - ly

102

breathe, didst on - ly ___ breathe, didst, breathe, ___ didst breathe ___ And

109

sent'st it ___ back to me: Since which it ___ grows, and

117

smells, I swear Not of it - self, ___ but ___ thee, I swear not ___ of it -

TREBLE 1

124

self, but thee, I swear, Not of it - self, but thee. And thee.

Drink to me only with thine eyes (Setting 5)

TREBLE 2

BEN JONSON

THOMAS LINLEY SENIOR (1733-95)

4



Drink to me on - ly with thine eyes,

10



with_ thine eyes, And I will pledge with_ mine;

17

[p]



Breathe but a kiss in - to_ the_ cup, breathe but a kiss in - to_ the_

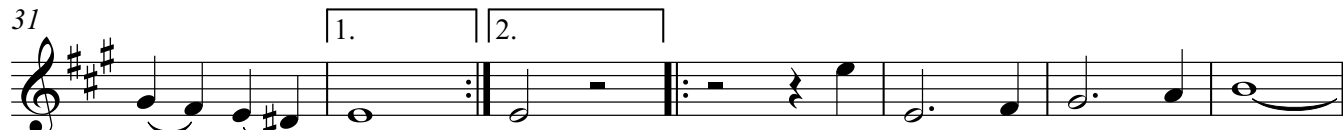
24



cup, And I'll not ask, not ask for wine, I'll not ask not_


31

1. 2.



ask_ for_ wine. wine. The thirst that from the soul,

38



_ de - rives De - mands, de - mands_ a_ drink di -

46

2



vine; But could I_ of Jove's nec - tar sip, I

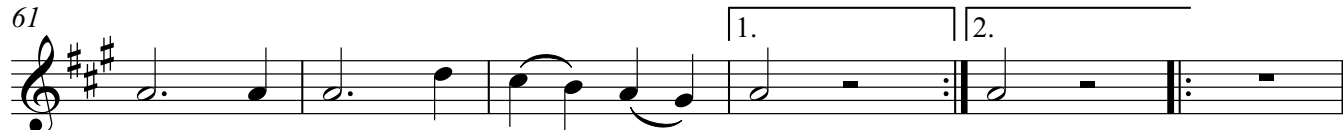
54



would not bar - ter thine, but could I of Jove's nec - tar_

61

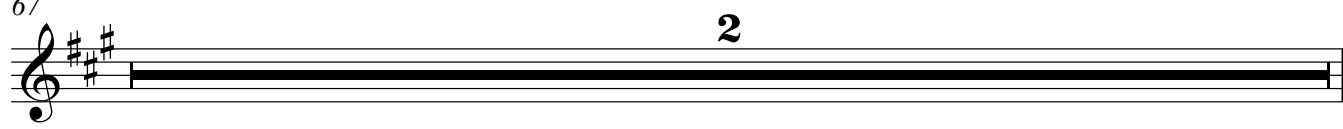
1. 2.



sip, I would not bar - ter_ thine. thine.

67

2



69

I sent thee late a rose - ate wreath, _____ a _____

76

rose - ate wreath, Not so much hon' - ring thee As

82

think - ing that on thy fair breast, as think - ing that on

88

thy fair breast *f* It could not, could not with - er'd be, it could not,

95

could not with - er'd be. *1.* *2.* be. And thou there - on didst

102

on - ly breathe didst breathe didst breathe, didst on - ly breathe And

109

sent'st it back to me: *2* Since which it grows, and

117

smells, I swear Not of it - self but thee, since which it

124

grows, and smells, I swear, Not of it - self but thee. *1.* *2.* thee.

Drink to me only with thine eyes (Setting 5)

BASS

BEN JONSON

THOMAS LINLEY SENIOR (1733-95)

8

Drink to me on - ly with thine eyes, And

13

[p]

I will pledge with mine; Breathe but a kiss in -

19

[p]

to the cup, breathe but a kiss in - to the

24

cup, And I'll not ask, not ask for wine, I'll not ask not

31

1.

2.

ask for wine. wine. The thirst that_ from the_

38

soul de - rives De - mands de - mands_ a_ drink di -

46

vine; But could I_ of Jove's nec - tar_ sip, Jove's nec - tar

53

sip, I would not bar - ter thine, but could I of Jove's

60

1.

2.

nec - tar sip, I would not bar - ter thine. thine.

67

6

73

I sent thee late a rose - ate wreath, Not so much hon'- ring

80

thee As think - ing that on

84

thy fair breast, as think - ing that on

88

thy fair breast It could not, couldnot with - er'd_ be, it could not,

95

could not with er'd be. be. And thou there -

102

-on didst_ on - ly breathe, didst breathe, didst on - ly__ breathe And

109

sent'st it__ back to me: Since which it__ grows, and smells, I__

116

swear, and smells, I swear Not of it - self but thee, since

123

which it grows, and smells, I swear,

127

Not of it - self but thee. thee.

Drink to me only with thine eyes (Setting 5)

BASSO

BEN JONSON

THOMAS LINLEY SENIOR (1733-95)

8

14

19

24

31

38

46

53

60

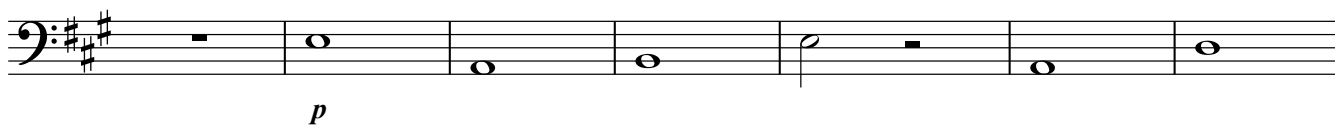
67

7

74



81



88



95



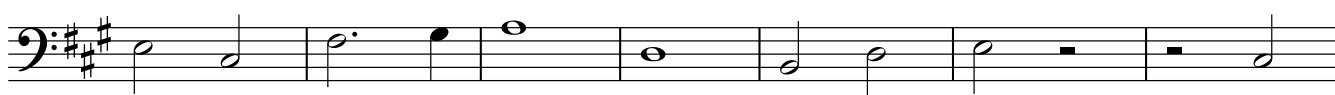
101



109



116



123

